

1U Type N+1 Redundant Power Supply

EFRP-463 / 553

EPS1U

460/550 watts Output Power
N+1 Redundant Configuration
Meet 1U Rackmount System



Dimensions: 98.5(W) x 40(H) x 267.7(D) mm

Features:

- ⦿ Compact size Module Design
- ⦿ Quick Removable Application
- ⦿ Active Power Factor Correction
- ⦿ Universal Power Input
- ⦿ Current Sharing on +5V, +3.3V and +12V
- ⦿ Remote DC Sense on +5V, +3.3V
- ⦿ Front panel LED to Indicate Power Status
- ⦿ Power Fault Alarm Signals
- ⦿ Over Voltage Protection
- ⦿ Over Current Protection
- ⦿ Over Power Protection
- ⦿ Short Circuit Protection
- ⦿ MTBF >100,000 Hours

General Specifications:

- ⦿ Input Range: 100 to 240 VAC, (for EFRP-463)
110 to 240 VAC, (for EFRP-553)
- ⦿ Power Factor: 0.98 minimum
- ⦿ Efficiency: 65% minimum, at full load
- ⦿ Hold up Time: 20mS minimum, at full load
- ⦿ PSON (Remote ON/OFF): TTL compatible
- ⦿ Power Good: 200 to 500 ms, TTL compatible
- ⦿ Cooling Fan: 38x38x28 mm
- ⦿ Operating Temperature: 0 to 50 °C (EFRP- 463)
0 to 40 °C (EFRP-553)
- ⦿ Operating Humidity: 20 to 90 %

Agency Requirements:

- ⦿ Harmonic: Meet EN61000-3-2
- ⦿ EMI/RFI: CE, FCC class B
- ⦿ Safety: UL, cUL, TUV, CB

Electrical Specifications:

Regulation, Ripple & Noise:

Output	+5V	+3.3V	+12V	-5V	-12V	5Vsb
Load Regulation	+5/-4 %	+5/-3 %	+5/-4 %	--	± 5%	± 5%
Cross Regulation	+5/-4 %	+5/-3 %	+5/-4 %	--	± 5%	± 5%
Line Regulation	± 1%	± 1%	± 1%	--	± 1%	± 1%
Ripple & Noise	50mV	50mV	120mV	--	120mV	50mV

Input and Output Ratings:

	Input			Watt	Load	Output				
	Voltage	Frequency	Current			+5V	+3.3V	+12V	-5V	-12V
100 - 240 VAC	47-63 Hz	8-4A	460W	Max Load	30A	28A	35A	--	0.8A	2A
				Min Load	3A	1A	1A	--	0A	0A
110 - 240 VAC	47-63 Hz	8-4A	550W	Max Load	30A	28A	35A	--	0.8A	2A
				Min Load	3A	1A	1A	--	0A	0A

Note: 1. The +5 & +3.3 Volt combine total output shall not exceed 200W

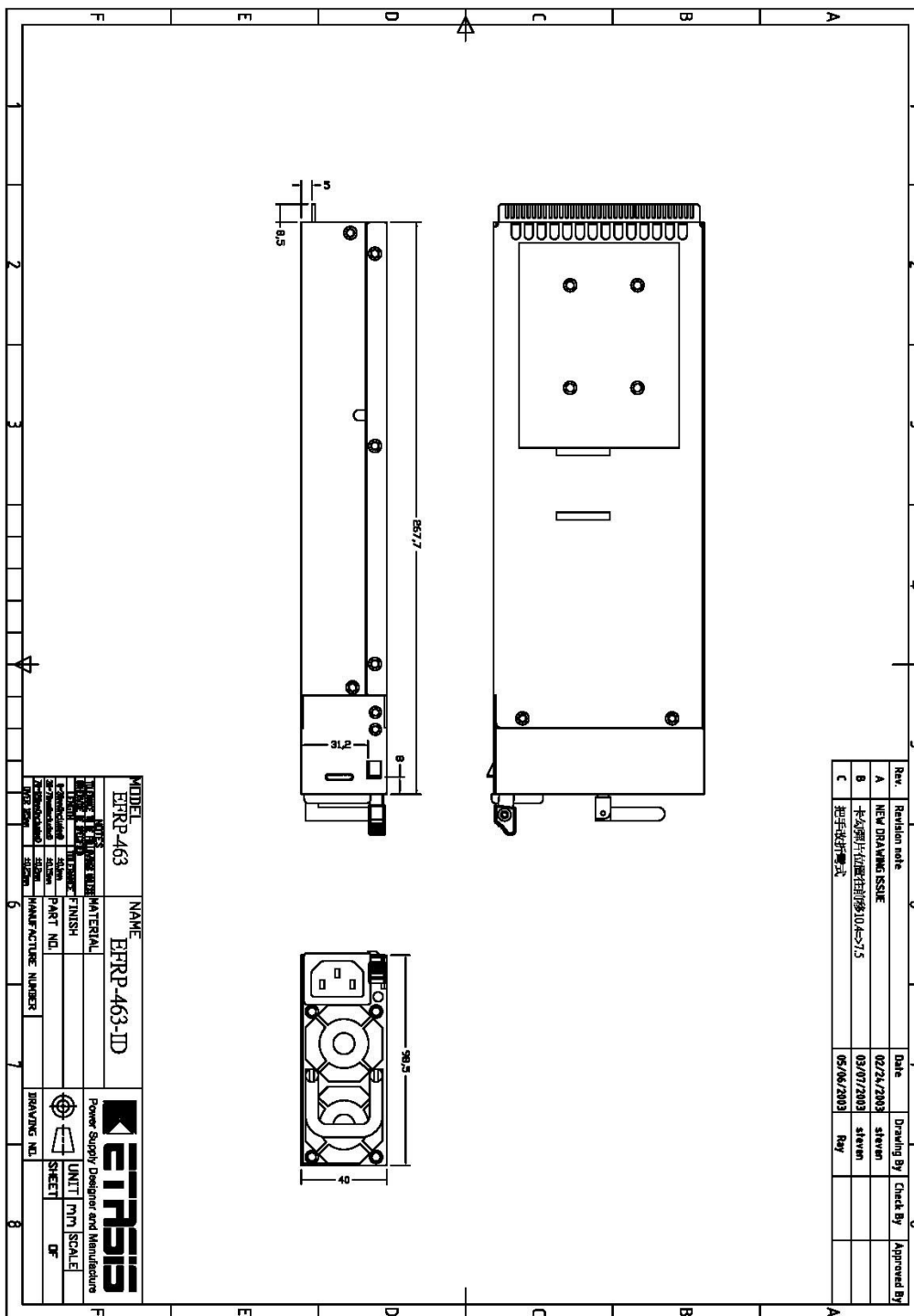
2. The +5, +3.3 and +12 Volt combine total output shall not exceed 440W for EFRP-463 & 530W for EFRP-553.

3: Noise bandwidth is from DC to 20 MHz.

1U Type N+1 Redundant Power Supply

EFRP-463 / 553

Dimensions (Unit: mm):



MODEL	EFRP-463	NAME	EFRP-463-ID
TYPE	POWER SUPPLY	MATERIAL	
FINISH		FINISH	
PART NO.		PART NO.	
MANUFACTURE NUMBER		MANUFACTURE NUMBER	
		Power Supply Designer and Manufacture	
UNIT	MM	SCALE	1:1
SHEET	01	OF	01